

PERFORMING ARTS - MUSIC

YEAR 8 Independent Learning Booklet 2021-2022



Norwood School Music Department - Year 8 Independent learning booklet



YEAR 8	Assessment Cycle 1.1	Assessment Cycle 1.2	Assessment Cycle 2.1	Assessment Cycle 2.2	Assessment Cycle 3.1	Assessment Cycle 3.2
	Siritual and Blues Music	Rock 'n' Roll and Pop	Leitmotif	Film Music	Rhythms of the world	Musical Futures : Solo Instrument

Content

Key words for describing Music	Definition	How you describe it
Texture	How many layers of sound can you hear?	Thin or thick
Rhythm	How sounds and silences are organised	Straight or Swung
Articulation	How long or short an individual note is	Staccato or legato
Devices		
Expression		
Dynamics	How loud or soft a piece of music is	Loud or soft or Forte or Piano
Tempo	The speed of a piece of music	Slow or fast
Instrument	The apparatus used by musicians to create instruments	Strings, Woodwind, Brass, Guitars, Drums, Vocals
Pitch	How high or low a note is	High or low
Structure	How is the music organised	Verse / Chorus

Listen to 'Ball and Biscuit' by The White Stripes (LC1 Blues Music) (Search for it on Youtube or Spotify) - fill out the grid below

Texture		
Rhythm		
Articulation		
Devices		
Expression		
Dynamics		
Tempo		
Instrument		
Pitch		
Structure		

Listen to 'E.T. The Extra Terrestrial by John Williams - (LC 2 Film Music)(Search for it on Youtube or Spotify) - fill out the grid below

Texture		
Rhythm		
Articulation		
Devices		
Expression		
Dynamics		
Tempo		
Instrument		
Pitch		
Structure		

Listen to 'E.T. The Extra Terrestrial by John Williams - (LC 2 Film Music)(Search for it on Youtube or Spotify) - fill out the grid below

Texture		
Rhythm		
Articulation		
Devices		
Expression		
Dynamics		
Tempo		
Instrument		
Pitch		
Structure		

1. Pick a song you like - this is very important to keep you motivated
2. Perform it on an instrument that you are excited about learning and have access to - these songs cater to a range of abilities
3. Practise it on your own or with a friend - music is often most fun when it is social - if you need help to get started come and see Mr Townsend or Mr Wolstenholme for help
4. Come and book a practise room at lunch time
5. Come and play it for Mr Townsend or Mr Wolstenholme in Music at KUG club on a Wednesday

LC1: Blues roots in Pop

Skills

Bronze			Silver			Gold		
In time	Correct notes	Fluency	Two hands(KB) Good instrumental technique	With Partner / Ensemble (in time)	Challenging piece	Creative arrangement	Lead a group	Highly Musical Outcome



1. You should be set up with an instrument, a chair, music and headphones (if using a keyboard) within two minutes
2. No instruments should be left on the floor or propped up against the wall
3. No wandering in and out of rooms - you should be sat down unless otherwise instructed
4. 3 class performers every 9 minutes
5. Do not unplug keyboards, headphones or computers - you will create problems for other people using the room

Bronze -

Learn the melody to Swing
Low Sweet Chariot

Swing Low Sweet Chariot

1

F Bb F C F

A F A F F F D C F F F F A A C C D C A C

Bb F

F F F D C F F F F A A G F

Swing low, sweet chariot
Coming for to carry me home
Swing low, sweet chariot
Coming for to carry he home x 2

I looked over Jordan and what did I see
Coming for to carry he home
A band of angels coming after me
Coming for to carry me home

Faith - Stevie Wonder and Ariana Grande



Chorus Melody - 'I got faith in you baby'

Chords

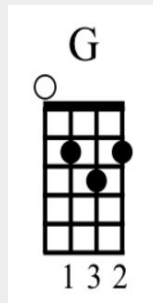
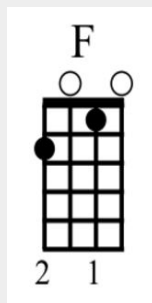
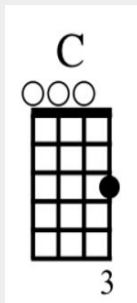
Musical notation for the chorus melody of 'Faith' in 4/4 time. The melody is written on three staves. Chords are indicated by letters in circles above the notes. The notes are: C4, E4, G4, C5, E5, G5, C6, E6, G6, C7, E7, G7, C8, E8, G8, C9, E9, G9, C10, E10, G10, C11, E11, G11, C12, E12, G12, C13, E13, G13, C14, E14, G14, C15, E15, G15, C16, E16, G16, C17, E17, G17, C18, E18, G18, C19, E19, G19, C20, E20, G20, C21, E21, G21, C22, E22, G22, C23, E23, G23, C24, E24, G24, C25, E25, G25, C26, E26, G26, C27, E27, G27, C28, E28, G28, C29, E29, G29, C30, E30, G30, C31, E31, G31, C32, E32, G32, C33, E33, G33, C34, E34, G34, C35, E35, G35, C36, E36, G36, C37, E37, G37, C38, E38, G38, C39, E39, G39, C40, E40, G40, C41, E41, G41, C42, E42, G42, C43, E43, G43, C44, E44, G44, C45, E45, G45, C46, E46, G46, C47, E47, G47, C48, E48, G48, C49, E49, G49, C50, E50, G50, C51, E51, G51, C52, E52, G52, C53, E53, G53, C54, E54, G54, C55, E55, G55, C56, E56, G56, C57, E57, G57, C58, E58, G58, C59, E59, G59, C60, E60, G60, C61, E61, G61, C62, E62, G62, C63, E63, G63, C64, E64, G64, C65, E65, G65, C66, E66, G66, C67, E67, G67, C68, E68, G68, C69, E69, G69, C70, E70, G70, C71, E71, G71, C72, E72, G72, C73, E73, G73, C74, E74, G74, C75, E75, G75, C76, E76, G76, C77, E77, G77, C78, E78, G78, C79, E79, G79, C80, E80, G80, C81, E81, G81, C82, E82, G82, C83, E83, G83, C84, E84, G84, C85, E85, G85, C86, E86, G86, C87, E87, G87, C88, E88, G88, C89, E89, G89, C90, E90, G90, C91, E91, G91, C92, E92, G92, C93, E93, G93, C94, E94, G94, C95, E95, G95, C96, E96, G96, C97, E97, G97, C98, E98, G98, C99, E99, G99, C100, E100, G100, C101, E101, G101, C102, E102, G102, C103, E103, G103, C104, E104, G104, C105, E105, G105, C106, E106, G106, C107, E107, G107, C108, E108, G108, C109, E109, G109, C110, E110, G110, C111, E111, G111, C112, E112, G112, C113, E113, G113, C114, E114, G114, C115, E115, G115, C116, E116, G116, C117, E117, G117, C118, E118, G118, C119, E119, G119, C120, E120, G120, C121, E121, G121, C122, E122, G122, C123, E123, G123, C124, E124, G124, C125, E125, G125, C126, E126, G126, C127, E127, G127, C128, E128, G128, C129, E129, G129, C130, E130, G130, C131, E131, G131, C132, E132, G132, C133, E133, G133, C134, E134, G134, C135, E135, G135, C136, E136, G136, C137, E137, G137, C138, E138, G138, C139, E139, G139, C140, E140, G140, C141, E141, G141, C142, E142, G142, C143, E143, G143, C144, E144, G144, C145, E145, G145, C146, E146, G146, C147, E147, G147, C148, E148, G148, C149, E149, G149, C150, E150, G150, C151, E151, G151, C152, E152, G152, C153, E153, G153, C154, E154, G154, C155, E155, G155, C156, E156, G156, C157, E157, G157, C158, E158, G158, C159, E159, G159, C160, E160, G160, C161, E161, G161, C162, E162, G162, C163, E163, G163, C164, E164, G164, C165, E165, G165, C166, E166, G166, C167, E167, G167, C168, E168, G168, C169, E169, G169, C170, E170, G170, C171, E171, G171, C172, E172, G172, C173, E173, G173, C174, E174, G174, C175, E175, G175, C176, E176, G176, C177, E177, G177, C178, E178, G178, C179, E179, G179, C180, E180, G180, C181, E181, G181, C182, E182, G182, C183, E183, G183, C184, E184, G184, C185, E185, G185, C186, E186, G186, C187, E187, G187, C188, E188, G188, C189, E189, G189, C190, E190, G190, C191, E191, G191, C192, E192, G192, C193, E193, G193, C194, E194, G194, C195, E195, G195, C196, E196, G196, C197, E197, G197, C198, E198, G198, C199, E199, G199, C200, E200, G200, C201, E201, G201, C202, E202, G202, C203, E203, G203, C204, E204, G204, C205, E205, G205, C206, E206, G206, C207, E207, G207, C208, E208, G208, C209, E209, G209, C210, E210, G210, C211, E211, G211, C212, E212, G212, C213, E213, G213, C214, E214, G214, C215, E215, G215, C216, E216, G216, C217, E217, G217, C218, E218, G218, C219, E219, G219, C220, E220, G220, C221, E221, G221, C222, E222, G222, C223, E223, G223, C224, E224, G224, C225, E225, G225, C226, E226, G226, C227, E227, G227, C228, E228, G228, C229, E229, G229, C230, E230, G230, C231, E231, G231, C232, E232, G232, C233, E233, G233, C234, E234, G234, C235, E235, G235, C236, E236, G236, C237, E237, G237, C238, E238, G238, C239, E239, G239, C240, E240, G240, C241, E241, G241, C242, E242, G242, C243, E243, G243, C244, E244, G244, C245, E245, G245, C246, E246, G246, C247, E247, G247, C248, E248, G248, C249, E249, G249, C250, E250, G250, C251, E251, G251, C252, E252, G252, C253, E253, G253, C254, E254, G254, C255, E255, G255, C256, E256, G256, C257, E257, G257, C258, E258, G258, C259, E259, G259, C260, E260, G260, C261, E261, G261, C262, E262, G262, C263, E263, G263, C264, E264, G264, C265, E265, G265, C266, E266, G266, C267, E267, G267, C268, E268, G268, C269, E269, G269, C270, E270, G270, C271, E271, G271, C272, E272, G272, C273, E273, G273, C274, E274, G274, C275, E275, G275, C276, E276, G276, C277, E277, G277, C278, E278, G278, C279, E279, G279, C280, E280, G280, C281, E281, G281, C282, E282, G282, C283, E283, G283, C284, E284, G284, C285, E285, G285, C286, E286, G286, C287, E287, G287, C288, E288, G288, C289, E289, G289, C290, E290, G290, C291, E291, G291, C292, E292, G292, C293, E293, G293, C294, E294, G294, C295, E295, G295, C296, E296, G296, C297, E297, G297, C298, E298, G298, C299, E299, G299, C300, E300, G300, C301, E301, G301, C302, E302, G302, C303, E303, G303, C304, E304, G304, C305, E305, G305, C306, E306, G306, C307, E307, G307, C308, E308, G308, C309, E309, G309, C310, E310, G310, C311, E311, G311, C312, E312, G312, C313, E313, G313, C314, E314, G314, C315, E315, G315, C316, E316, G316, C317, E317, G317, C318, E318, G318, C319, E319, G319, C320, E320, G320, C321, E321, G321, C322, E322, G322, C323, E323, G323, C324, E324, G324, C325, E325, G325, C326, E326, G326, C327, E327, G327, C328, E328, G328, C329, E329, G329, C330, E330, G330, C331, E331, G331, C332, E332, G332, C333, E333, G333, C334, E334, G334, C335, E335, G335, C336, E336, G336, C337, E337, G337, C338, E338, G338, C339, E339, G339, C340, E340, G340, C341, E341, G341, C342, E342, G342, C343, E343, G343, C344, E344, G344, C345, E345, G345, C346, E346, G346, C347, E347, G347, C348, E348, G348, C349, E349, G349, C350, E350, G350, C351, E351, G351, C352, E352, G352, C353, E353, G353, C354, E354, G354, C355, E355, G355, C356, E356, G356, C357, E357, G357, C358, E358, G358, C359, E359, G359, C360, E360, G360, C361, E361, G361, C362, E362, G362, C363, E363, G363, C364, E364, G364, C365, E365, G365, C366, E366, G366, C367, E367, G367, C368, E368, G368, C369, E369, G369, C370, E370, G370, C371, E371, G371, C372, E372, G372, C373, E373, G373, C374, E374, G374, C375, E375, G375, C376, E376, G376, C377, E377, G377, C378, E378, G378, C379, E379, G379, C380, E380, G380, C381, E381, G381, C382, E382, G382, C383, E383, G383, C384, E384, G384, C385, E385, G385, C386, E386, G386, C387, E387, G387, C388, E388, G388, C389, E389, G389, C390, E390, G390, C391, E391, G391, C392, E392, G392, C393, E393, G393, C394, E394, G394, C395, E395, G395, C396, E396, G396, C397, E397, G397, C398, E398, G398, C399, E399, G399, C400, E400, G400, C401, E401, G401, C402, E402, G402, C403, E403, G403, C404, E404, G404, C405, E405, G405, C406, E406, G406, C407, E407, G407, C408, E408, G408, C409, E409, G409, C410, E410, G410, C411, E411, G411, C412, E412, G412, C413, E413, G413, C414, E414, G414, C415, E415, G415, C416, E416, G416, C417, E417, G417, C418, E418, G418, C419, E419, G419, C420, E420, G420, C421, E421, G421, C422, E422, G422, C423, E423, G423, C424, E424, G424, C425, E425, G425, C426, E426, G426, C427, E427, G427, C428, E428, G428, C429, E429, G429, C430, E430, G430, C431, E431, G431, C432, E432, G432, C433, E433, G433, C434, E434, G434, C435, E435, G435, C436, E436, G436, C437, E437, G437, C438, E438, G438, C439, E439, G439, C440, E440, G440, C441, E441, G441, C442, E442, G442, C443, E443, G443, C444, E444, G444, C445, E445, G445, C446, E446, G446, C447, E447, G447, C448, E448, G448, C449, E449, G449, C450, E450, G450, C451, E451, G451, C452, E452, G452, C453, E453, G453, C454, E454, G454, C455, E455, G455, C456, E456, G456, C457, E457, G457, C458, E458, G458, C459, E459, G459, C460, E460, G460, C461, E461, G461, C462, E462, G462, C463, E463, G463, C464, E464, G464, C465, E465, G465, C466, E466, G466, C467, E467, G467, C468, E468, G468, C469, E469, G469, C470, E470, G470, C471, E471, G471, C472, E472, G472, C473, E473, G473, C474, E474, G474, C475, E475, G475, C476, E476, G476, C477, E477, G477, C478, E478, G478, C479, E479, G479, C480, E480, G480, C481, E481, G481, C482, E482, G482, C483, E483, G483, C484, E484, G484, C485, E485, G485, C486, E486, G486, C487, E487, G487, C488, E488, G488, C489, E489, G489, C490, E490, G490, C491, E491, G491, C492, E492, G492, C493, E493, G493, C494, E494, G494, C495, E495, G495, C496, E496, G496, C497, E497, G497, C498, E498, G498, C499, E499, G499, C500, E500, G500, C501, E501, G501, C502, E502, G502, C503, E503, G503, C504, E504, G504, C505, E505, G505, C506, E506, G506, C507, E507, G507, C508, E508, G508, C509, E509, G509, C510, E510, G510, C511, E511, G511, C512, E512, G512, C513, E513, G513, C514, E514, G514, C515, E515, G515, C516, E516, G516, C517, E517, G517, C518, E518, G518, C519, E519, G519, C520, E520, G520, C521, E521, G521, C522, E522, G522, C523, E523, G523, C524, E524, G524, C525, E525, G525, C526, E526, G526, C527, E527, G527, C528, E528, G528, C529, E529, G529, C530, E530, G530, C531, E531, G531, C532, E532, G532, C533, E533, G533, C534, E534, G534, C535, E535, G535, C536, E536, G536, C537, E537, G537, C538, E538, G538, C539, E539, G539, C540, E540, G540, C541, E541, G541, C542, E542, G542, C543, E543, G543, C544, E544, G544, C545, E545, G545, C546, E546, G546, C547, E547, G547, C548, E548, G548, C549, E549, G549, C550, E550, G550, C551, E551, G551, C552, E552, G552, C553, E553, G553, C554, E554, G554, C555, E555, G555, C556, E556, G556, C557, E557, G557, C558, E558, G558, C559, E559, G559, C560, E560, G560, C561, E561, G561, C562, E562, G562, C563, E563, G563, C564, E564, G564, C565, E565, G565, C566, E566, G566, C567, E567, G567, C568, E568, G568, C569, E569, G569, C570, E570, G570, C571, E571, G571, C572, E572, G572, C573, E573, G573, C574, E574, G574, C575, E575, G575, C576, E576, G576, C577, E577, G577, C578, E578, G578, C579, E579, G579, C580, E580, G580, C581, E581, G581, C582, E582, G582, C583, E583, G583, C584, E584, G584, C585, E585, G585, C586, E586, G586, C587, E587, G587, C588, E588, G588, C589, E589, G589, C590, E590, G590, C591, E591, G591, C592, E592, G592, C593, E593, G593, C594, E594, G594, C595, E595, G595, C596, E596, G596, C597, E597, G597, C598, E598, G598, C599, E599, G599, C600, E600, G600, C601, E601, G601, C602, E602, G602, C603, E603, G603, C604, E604, G604, C605, E605, G605, C606, E606, G606, C607, E607, G607, C608, E608, G608, C609, E609, G609, C610, E610, G610, C611, E611, G611, C612, E612, G612, C613, E613, G613, C614, E614, G614, C615, E615, G615, C616, E616, G616, C617, E617, G617, C618, E618, G618, C619, E619, G619, C620, E620, G620, C621, E621, G621, C622, E622, G622, C623, E623, G623, C624, E624, G624, C625, E625, G625, C626, E626, G626, C627, E627, G627, C628, E628, G628, C629, E629, G629, C630, E630, G630, C631, E631, G631, C632, E632, G632, C633, E633, G633, C634, E634, G634, C635, E635, G635, C636, E636, G636, C637, E637, G637, C638, E638, G638, C639, E639, G639, C640, E640, G640, C641, E641, G641, C642, E642, G642, C643, E643, G643, C644, E644, G644, C645, E645, G645, C646, E646, G646, C647, E647, G647, C648, E648, G648, C649, E649, G649, C650, E650, G650, C651, E651, G651, C652, E652, G652, C653, E653, G653, C654, E654, G654, C655, E655, G655, C656, E656, G656, C657, E657, G657, C658, E658, G658, C659, E659, G659, C660, E660, G660, C661, E661, G661, C662, E662, G662, C663, E663, G663, C664, E664, G664, C665, E665, G665, C666, E666, G666, C667, E667, G667, C668, E668, G668, C669, E669, G669, C670, E670, G670, C671, E671, G671, C672, E672, G672, C673, E673, G673, C674, E674, G674, C675, E675, G675, C676, E676, G676, C677, E677, G677, C678, E678, G678, C679, E679, G679, C680, E680, G680, C681, E681, G681, C682, E682, G682, C683, E683, G683, C684, E684, G684, C685, E685, G685, C686, E686, G686, C687, E687, G687, C688, E688, G688, C689, E689, G689, C690, E690, G690, C691, E691, G691, C692, E692, G692, C693, E693, G693, C694, E694, G694, C695, E695, G695, C696, E696, G696, C697, E697, G697, C698, E698, G698, C699, E699, G699, C700, E700, G700, C701, E701, G701, C702, E702, G702, C703, E703, G703, C704, E704, G704, C705, E705, G705, C706, E706, G706, C707, E707, G707, C708, E708, G708, C709, E709, G709, C710, E710, G710, C711, E711, G711, C712, E712, G712, C713, E713, G713, C714, E714, G714, C715, E715, G715, C716, E716, G716, C717, E717, G717, C718, E718, G718, C719, E719, G719, C720, E720, G720, C721, E721, G721, C722, E722, G722, C723, E723, G723, C724, E724, G724, C725, E725, G725, C726, E726, G726, C727, E727, G727, C728, E728, G728, C729, E729, G729, C730, E730, G730, C731, E731, G731, C732, E732, G732, C733, E733, G733, C734, E734, G734, C735, E735, G735, C736, E736, G736, C737, E737, G737, C738, E738, G738, C739, E739, G739, C740, E740, G740, C741, E741, G741, C742, E742, G742, C743, E743, G743, C744, E744, G744, C745, E745, G745, C746, E746, G746, C747, E747, G747, C748, E748, G748, C749, E749, G749, C750, E750, G750, C751, E751, G751, C752, E752, G752, C753, E753, G753, C754, E754, G754, C755, E755, G755, C756, E756, G756, C757, E757, G757, C758, E758, G758, C759, E759, G759, C760, E760, G760, C761, E761, G761, C762, E762, G762, C763, E763, G763, C764, E764, G764, C765, E765, G765, C766, E766, G766, C767, E767, G767, C768, E768, G768, C769, E769, G769, C770, E770, G770, C771, E771, G771, C772, E772, G772, C773, E773, G773, C774, E774, G774, C775, E775, G775, C776, E776, G776, C777, E777, G777, C778, E778, G778, C779, E779, G779, C780, E780, G780, C781, E781, G781, C782, E782, G782, C783, E783, G783, C784, E784, G784, C785, E785, G785, C786, E786, G786, C787, E787, G787, C788, E788, G788, C789, E789, G789, C790, E790, G790, C791, E791, G791, C792, E792, G792, C793, E793, G793, C794, E794, G794, C795, E795, G795, C796, E796, G796, C797, E797, G797, C798, E798, G798, C799, E799, G799, C800, E800, G800, C801, E801, G801, C802, E802, G802, C803, E803, G803, C804, E804, G804, C805, E805, G805, C806, E806, G806, C807, E807, G807, C808, E808, G808, C809, E809, G809, C810, E810, G810, C811, E811, G811, C812, E812, G812, C813, E813, G813, C814, E814, G814, C815, E815, G815, C816, E816, G816, C817, E817, G817, C818, E818, G818, C819, E819, G819, C820, E820, G820, C821, E821, G821, C822, E822, G822, C823, E823, G823, C824, E824, G824, C825, E825, G825, C826, E826, G826, C827, E827, G827, C828, E828, G828, C829, E829, G

12 Bar Blues

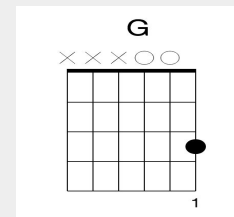
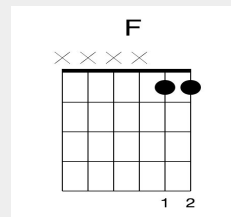
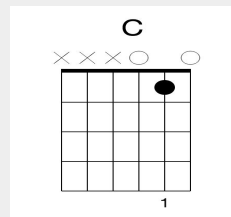
Each Square is 4 beats

C	C	C	C
F	F	C	C
G	F	C	G

Uke
Chords



Easy
Guitar
chords



Chords

C Bb G Bb C Bb G Bb C Bb G Bb
 C Bb G Bb F Eb C Eb F Eb C C C Bb G Bb
 C Bb G Bb G G G F F F C G Bb C

Faith - Stevie Wonder and Ariana Grande

Guitar / Bass - Bass line

Lowest three strings

D-----3--1----1--3--1-----
A--3--1----1--3--1----1--3--1----1--3--1-----3--3--1----1--3--1-----3--
E-----3-----3-----3-----3-----3-----3-----3--3--3--3--1--1--1-----

D-----
A-----1---3---
E--3-----

Faith - Stevie Wonder and Ariana Grande

See the girl with the diamonds and the shoes? yeah
She walks around like she's got nothin' to lose
Yes she's a go-getter, she's everybody's type
She's a queen of the city but she don't believe the hype
She's got her own elevation, holy motivation
'Til I wrote some letters on big bold signs

I got faith in you baby, I got faith in you now
And you've been such a, such a good friend of me
Know that I love you somehow
I met you, hallelujah, I got faith

See the boy with the Stevie Wonder swag?
Ain't gotta cup all the magic that he has
He's a go-getter, he's everybody's type
I'mma make it my mission, make him feel alright
He's a twelve on a ten point, rockin' out to his joint
Just say the word 'cause I can sing all night

Bronze - learn the intro to
'Rock around the Clock' on
Keyboard



Rock around the Clock - Intro

The image displays the musical notation for the introduction of the song 'Rock around the Clock' on a keyboard. It consists of two staves in 4/4 time. The top staff features a melody of eighth and quarter notes, while the bottom staff provides a harmonic accompaniment using chords. Chord names (C, E, G) are written below the notes to indicate the required fingerings.

Staff 1 (Melody):

- Measure 1: C (quarter), C (quarter), CC (beamed eighth notes), C (quarter), C (quarter), C (quarter), C (quarter), C (quarter)
- Measure 2: E (quarter), E (quarter), E (quarter), E (quarter), E (quarter), E (quarter), E (quarter), E (quarter)
- Measure 3: G (quarter), G (quarter), G (quarter), G (quarter), G (quarter), G (quarter), G (quarter), G (quarter)

Staff 2 (Accompaniment):

- Measure 1: G (quarter), E (quarter), C (quarter), G (quarter), E (quarter), C (quarter), G (quarter), E (quarter), C (quarter), G (quarter), E (quarter), C (quarter)
- Measure 2: G (quarter), E (quarter), C (quarter), G (quarter), E (quarter), C (quarter), G (quarter), E (quarter), C (quarter), G (quarter), E (quarter), C (quarter)
- Measure 3: G (quarter), E (quarter), C (quarter), G (quarter), E (quarter), C (quarter), G (quarter), E (quarter), C (quarter), G (quarter), E (quarter), C (quarter)

Silver - Perform the Melody to Rock
Around the Clock in time with a
Partner playing the chords



Rock around the Clock - Main Melody

Melody

The melody is written in 4/4 time. The notes and chords are as follows:

Staff 1: C (circled), C, C, C, C, E, G, C, E, G, C, E, G, A, Bb, A, G, E, G, F, E, C. Chords: C (circled), F (circled).

Staff 2: G, F, E, G, G, G, G, F, E, C, G, F, E, F, F, F, F, F, F, F, G, G. Chords: C (circled), G (circled), F (circled).

Staff 3: F, E, C, C. Chord: C (circled).

Rock around the Clock - Walking Bass Line

Bass Line

The image displays a walking bass line for the song "Rock around the Clock" in 4/4 time. It consists of two staves of music. The first staff begins with a circled 'C' above the first measure. The second staff begins with a circled 'C' above the first measure and includes additional circled notes: 'G' above the 5th measure, 'F' above the 6th measure, and 'C' above the 7th measure. The notes are written in bass clef, and the key signature has one flat (Bb). The notes are grouped into measures, and the corresponding chord labels are written below the staff.

Staff 1:

C E G A Bb A G E C E G A Bb A G E F A C D Eb D C A

Staff 2:

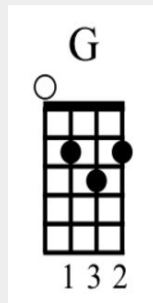
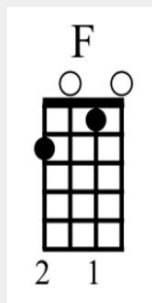
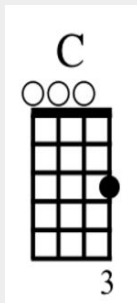
C E G A Bb A G E G B D E F A C D C E G A Bb A G E

12 Bar Blues

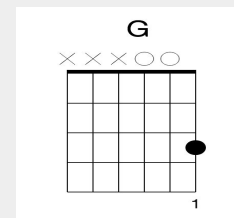
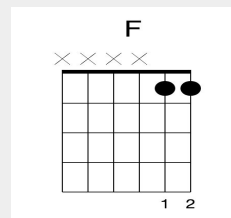
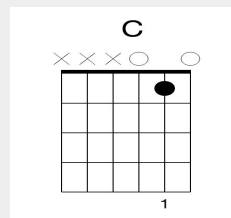
Each Square is 4 beats

C	C	C	C
F	F	C	C
G	F	C	G

Uke
Chords



Easy
Guitar
chords



Rock Around the Clock lyrics

Put your glad rags on and join me hon'
We'll have some fun when the clock strikes one
We're gonna rock around the clock tonight
We're gonna rock, rock, rock, 'till broad daylight
We're gonna rock, gonna rock around the clock tonight

When the clock strikes two, three and four
If the band slows down we'll yell for more
We're gonna rock around the clock tonight
We're gonna rock, rock, rock, 'till broad daylight
We're gonna rock, gonna rock around the clock tonight

Sunshine of your love

This song uses the notes of the blues scale


1



C C Bb C G F# F C Eb C

Play this
four times


9



F F Eb F C B Bb F Ab F

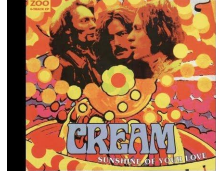
Play this
two times

1



C C Bb C G F# F C Eb C

Play this
two times



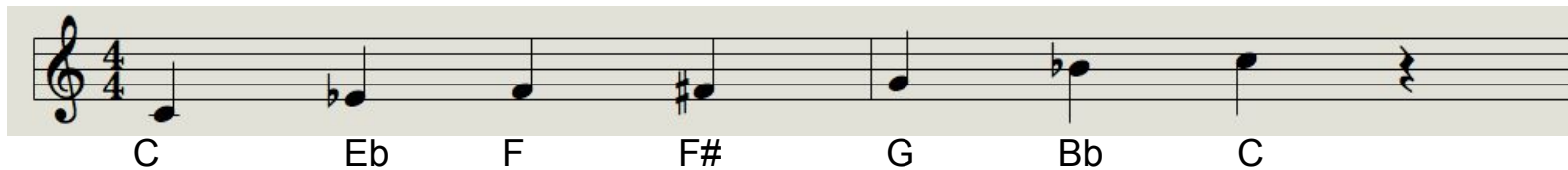
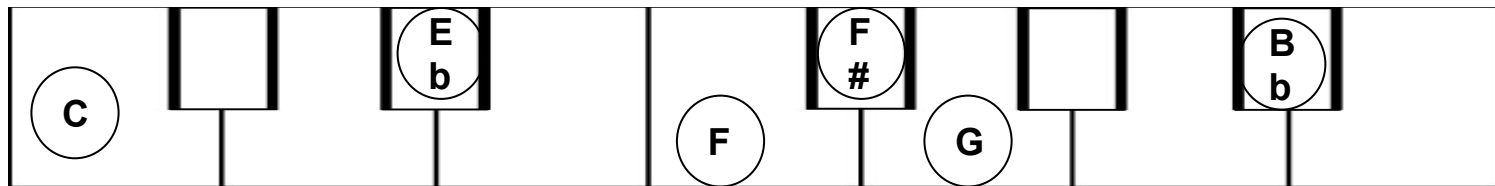
Gold - try using the blues scale to improvise over your 12 bar blues chord sequence

Guitar Blues Scale (highest two strings)

E-----1--2--3--6--8-----
B---1-4-----

Uke Blues Scale

A-----
E-----1--2--3--6--8-----
C---0-3-----
G-----



Gold - try creating your own blues song using the 12 bar blues and singing along

A I'm sittin' at my school desk, tryin' to open up my eyes,
A I'm sittin' at my school desk, tryin' to open up my eyes,
B Up too late with home work, that's cuttin' me down to size.

I Said,

A I'm sittin' at my school desk, tryin' to stay awake
A I'm sittin' at my school desk, tryin' to stay awake
B Up too late with my homework, Lord I made a Big Mistake.

Cause I, um,

A I'm sittin' at my school desk, Watchin' time pass on by
A I'm sittin' at my school desk, Watchin' time pass on by
B Up too late with my homework, don't want no F passin' by.

(12 bar instrumental blues jam)

A I'm sittin' at my school desk, and now today's the big day
A I'm sittin' at my school desk, and now today's the big day
B Up too late with my homework, but at least I got a straight A.

(walk down Outro)

1. Your subject must be **SAD**
2. Your first two lines must be **THE SAME**
3. Your third line must **BE DIFFERENT**



Line 1 (Establishes) -

A

Line 2 (Same as Line 1) -

A

Line 3 (Contrasting and rhymes with line 1) -

B

Line 1 (Establishes) -

A

Line 2 (Same as Line 1) -

A

Line 3 (Contrasting and rhymes with line 1) -

B

Name:

Form:

T	Texture	How the layers of sound are working together
R	Rhythm	syncopated, dotted rhythms, swung rhythms
A	Articulation	legato or staccato
D	Dynamics	how loud or quiet
E	Expression	the mood of the music
D	Devices	trills, ostinato, riff
T	Tempo	Fast or slow
I	Instruments	orchestral, jazz band, rock band...
P	Pitch	high or low
S	Structure	the organisation of the sections

12 Bar Blues

Each Square is 4 beats

C	C	C	C
F	F	C	C
G	F	C	G

C Major **F Major** **G Major**

Keyboard

= C min. pent. scale

C Blues scale

Rock 'n' Roll was a teenage phenomenon written for dancing

It mostly used the 12 Bar Blues chord sequence

It had a fast tempo

It was played on electric instruments

It usually featured an electric guitar solo

It used a walking bass

Ragtime is piano music

Jazz trio is piano, Bass and drums

Jazz often uses **improvisation**

Jazz can be played **solo** or part of a **trio** or **quartet**

Musicians take it turn to play **Solos**

Scat is a form of vocal improvisation

Chicago Blues uses

Electric Guitars & Harmonicas

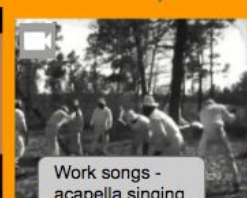
Bigger bands with thicker textures

BB King was a big star

Listen out for the BLUE NOTES



Spiritual Songs - Acapella singing



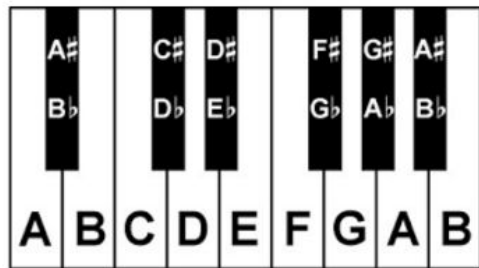
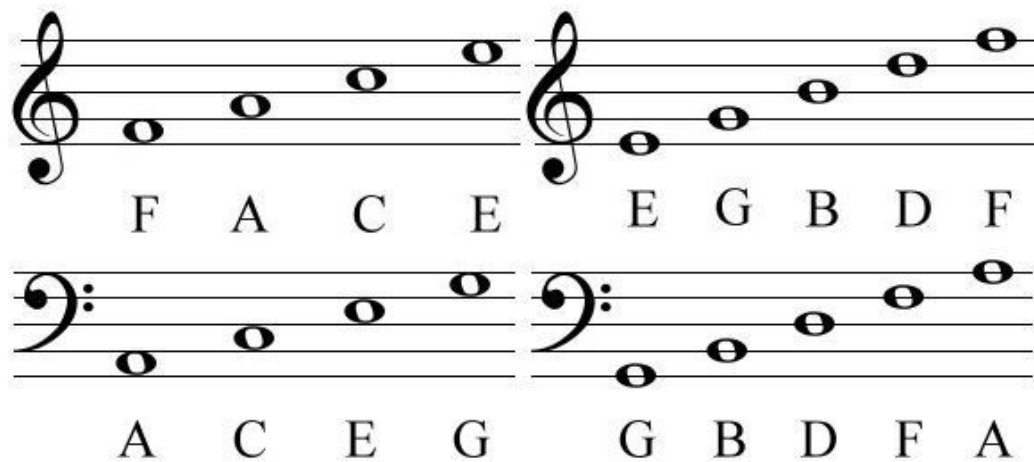
Work songs - acapella singing



Robert Johnson - Delta Blues



Slide Guitar



Semi-Breve

Minim

Crotchet

Quaver

Semi-Quaver

		4
		2
		1
		$\frac{1}{2}$
		$\frac{1}{4}$

LC2: Film Themes and Leitmotif

Bronze			Silver			Gold		
In time	Correct notes	Fluency	Two hands(KB) Good instrumental technique	With Partner / Ensemble (in time)	Challenging piece	Creative arrangement	Lead a group	Highly Musical Outcome

1. You should be set up with an instrument, a chair, music and headphones (if using a keyboard) within two minutes
2. No instruments should be left on the floor or propped up against the wall
3. No wandering in and out of rooms - you should be sat down unless otherwise instructed
4. 3 class performers every 9 minutes
5. Do not unplug keyboards, headphones or computers - you will create problems for other people using the room





Harry Potter Theme

John Williams

B E G F# E B A F# E G F# D F B B E G F# E B

E E E E B F# B B E E

D C# C Ab C B Bb Bb G E

G F A F# E E

Silver - Play the whole melody

Gold - Two hands together

Hedwigs theme on Guitar - Hard - Silver

```
e|---0-3-2-0--7-5--2---0-3-2---1-----|
B|-0-----4--0-----|
G|-----|
D|-----|
A|-----|
E|-----|
```

```
e|---0--3-2-0--7-10-9-8---8-7-6--3-0--|
B|-0-----9-----|
G|-----3-----|
D|-----|
A|-----|
E|-----|
```

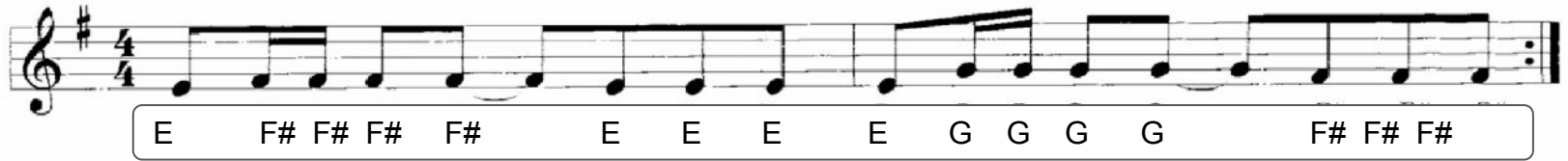
Bass Part for Guitar - Easy - Bronze

E---0---0---0---0-7---2---7---7---0---0---3---1---5---2---0---0---

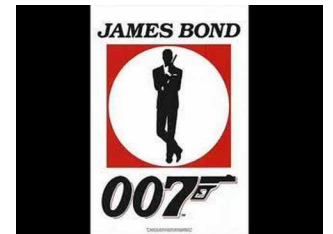
James Bond Theme

John Barry

Intro Melody - RH - Bronze



Chords - LH - Bronze



Both together - Silver

James Bond Theme

Guitar Chords - Keep repeating these whilst a partner plays the melody - then try swapping

A---2---3---4---3-----
E---0---0---0---0-----

Guitar (or Uke) melody - repeat 4 times

E--0--2--2--2--2--0--0--0--0---3--3--3--2--2--2--

Guitar (or Uke) melody ending

A--6--5-----
E-----7---5---7-----

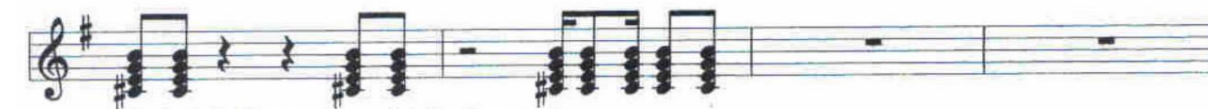
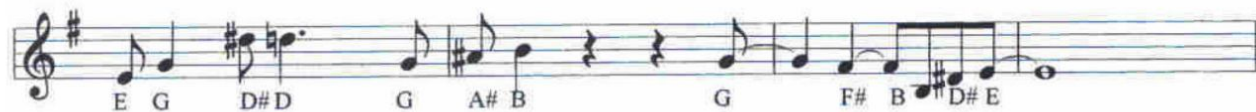
Uke Chords -

You can play the same as the guitar but on the top two strings or challenge yourself with these trickier chords

A--2--3--4--3
E--3--3--3--3
C--4--4--4--4
G--0--0--0--0

Main Theme

James Bond Theme



C#+E+G+B - These notes are used in all of these chords.

Ending



Gold - All the parts together - two hands

Jurassic Park Theme

John Williams

Voice: Flute
Rhythm: 8th beat
Tempo: Rather slow $\text{♩} = 62$
Synchro start: On

Chords

The first line of music consists of two measures. The first measure contains a C4 quarter note and a C5 quarter note. The second measure contains a C4 quarter note, a B4 quarter note, and a C5 quarter note. The third measure contains a C4 quarter note, a B4 quarter note, and a C5 quarter note. The fourth measure contains a C4 quarter note, a D4 quarter note, and a C5 quarter note. The fifth measure contains a D4 quarter note, a D4 quarter note, and a C5 quarter note. The sixth measure contains a F4 quarter note, a F4 quarter note, and a C5 quarter note. The seventh measure contains an E4 quarter note and a C5 quarter note. The second line of music consists of two measures. The first measure contains a D4 quarter note, a B4 quarter note, and a G4 quarter note. The second measure contains an E4 quarter note, a C5 quarter note, and a D5 quarter note. The third measure contains a G4 quarter note, a C5 quarter note, and a F4 quarter note. The fourth measure contains an E4 quarter note, an E4 quarter note, and a D4 quarter note. The fifth measure contains a D4 quarter note, a D4 quarter note, and a C5 quarter note. The sixth measure contains a D4 quarter note, a D4 quarter note, and a C5 quarter note.

C C B C C B C D D F F E C

G C G C F G

D B G E C D G C F E E D D

This is just the intro...

To go for Gold - try the full version



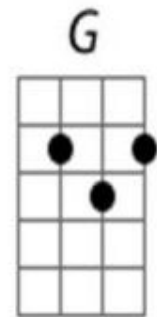
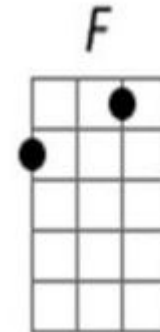
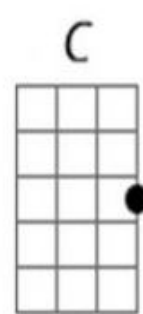
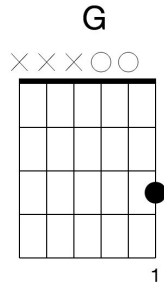
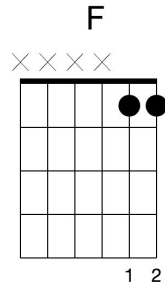
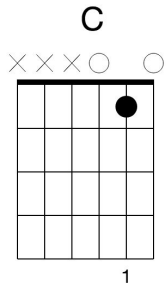
Jurassic Park Theme

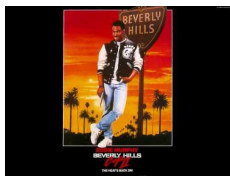
Guitar Melody - It will work on Ukulele too but it be in a different key

E-----1--1--0-----0-----3--1--0--0-----
 B--1---1-0-1---1-0-1--3--3-----1--3--0-----1--3-----1-----3--3--
 G-----0-----

Bronze - Just the Melody

Silver - Play with a partner playing the chords





Axel F / Crazy Frog

Bronze - Just the Melody

Silver - Play with a partner playing the chords

4/4

A C A A D A G A E A A F E C A E A A G G E B A

A A G G E G A A A D E G A F F G G E G A G G E D C

E-----0-----1--0-----0--5-----

B----1-----3-----1-----0-----

G-2-----2-2-----2-0--2-----2-2-2-----2-----2-0-0-----2-----

D-----2-----

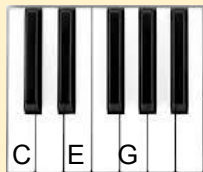
A-----

E-----

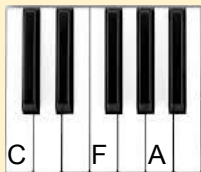
LC: - To create a leitmotif for a film character of your choice eg. Superman or Batman

1. Choose an appropriate instrument
2. Create a melody using notes C,D,E,F,G using question and answer phrasing
3. Add chords to your melody

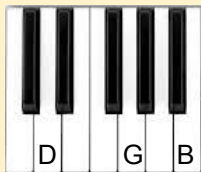
C major,



F major



G major



notes for the melody

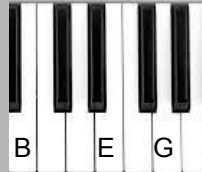


1. Choose an appropriate instrument
2. Create a minor melody using notes A,B,C,D,E using question and answer phrasing
3. Add chords to your melody

A minor



E minor



notes for the melody



Focus:

**composing a
melody with
question and
answer
phrasing**



LC3: Rhythms of the World



Bronze			Silver			Gold		
In time	Correct notes	Fluency	Two hands(KB) Good instrumental technique	With Partner / Ensemble (in time)	Challenging piece	Creative arrangement	Lead a group	Highly Musical Outcome

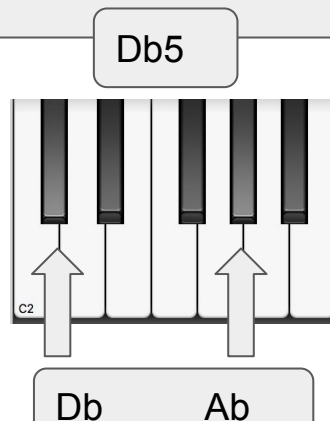
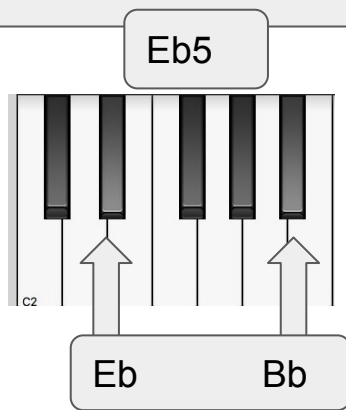
1. You should be set up with an instrument, a chair, music and headphones (if using a keyboard) within two minutes
2. No instruments should be left on the floor or propped up against the wall
3. No wandering in and out of rooms - you should be sat down unless otherwise instructed
4. 3 class performers every 9 minutes
5. Do not unplug keyboards, headphones or computers - you will create problems for other people using the room

Mudian Te Bach Ke - Panjabi MC

Db Eb Eb Eb Eb Eb Eb Eb Db Eb Eb Eb Eb Eb Eb Eb

Db Eb Eb Eb E E E E Db Eb Eb E E E E

Keyboard
Chords



Mudian Te Bach Ke - Panjabi MC

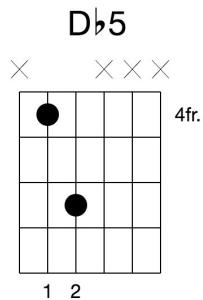
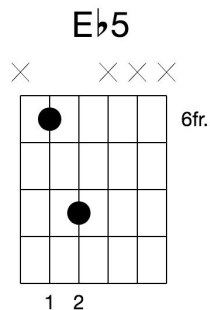
Guitar - B string (second highest)

B--2---4-4---4-4---4-4---4---2---4-4-4-4-4-4-4---2---4-4-4-5---5-5-5-2---4-4-5-5-5-5-5---

Uke - A string (highest)

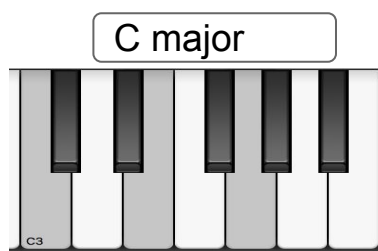
B-4---6-6---6-6---6-6---6---4---6-6-6-6-6-6-6---4---6-6-6-7---7-7-7-4---6-6-7-7-7-7---

Guitar
chords

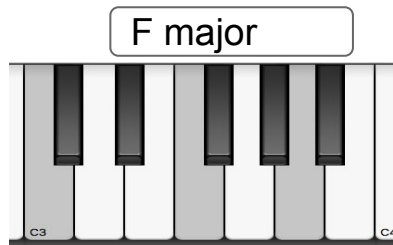


The Lion Sleeps tonight / Mbube

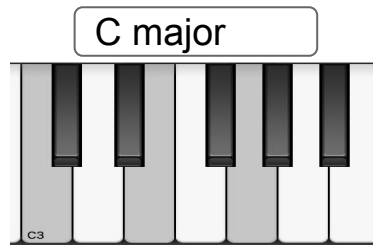
Chords - hold each note for four beats



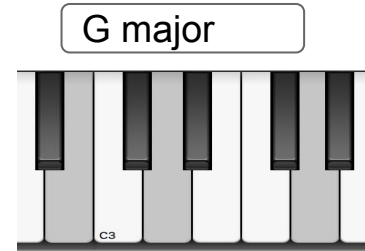
C E G



C F A

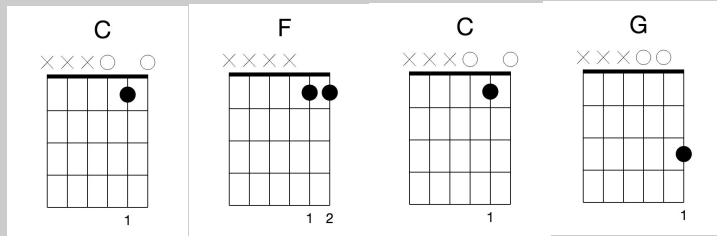


C E G

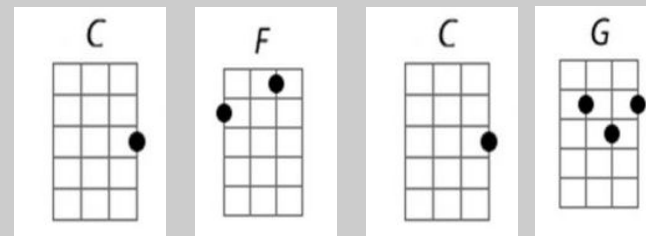


B D G

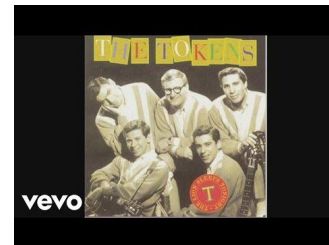
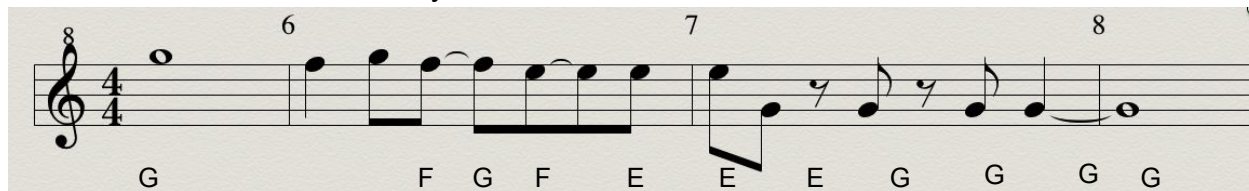
Guitar
Chords



Uke
Chords



Chorus Hook Melody



Riff - can be repeated throughout - 'wimbawe-a-wimbawe.....'

1 2 3 4

E E E E E E E F F F F F F F E E E E E E

D D D D D D D

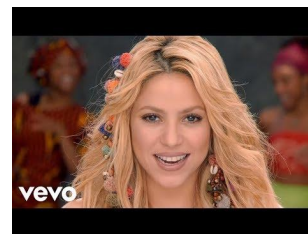
Verse Melody - 'In the Jungle.....'

13 14 15 16 17 18 19 20

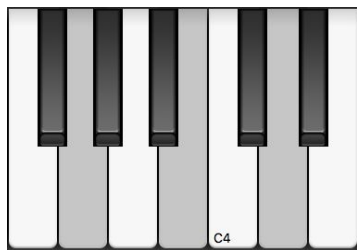
C D E D E F E D C D E D C E D

G E D E G F E D C D E D C E D

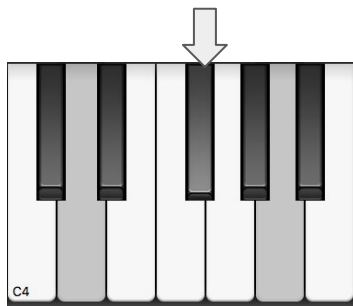
Waka Waka



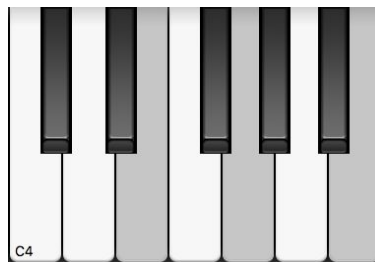
G G G G G A G A A A A A B G A B B B G G E G E D B G E E G G



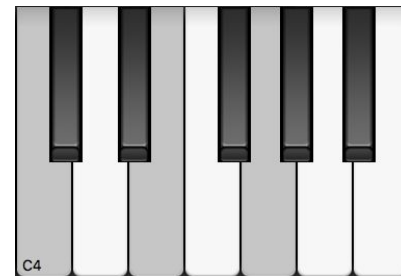
G - B - D



D - F# - A

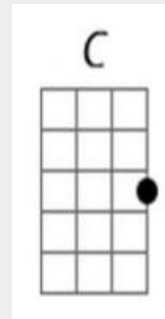
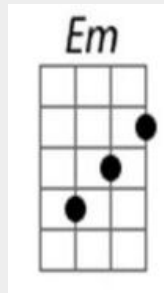
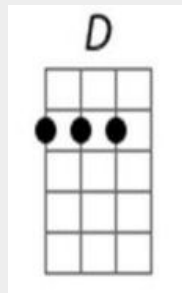
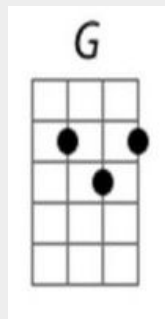


E - G - B

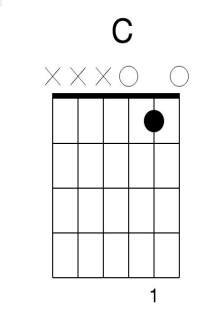
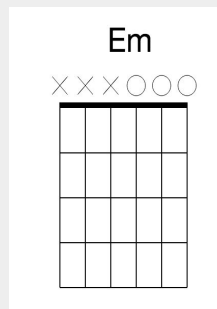
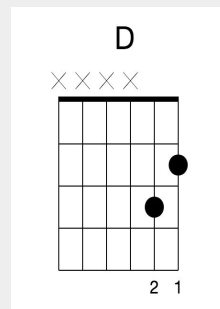
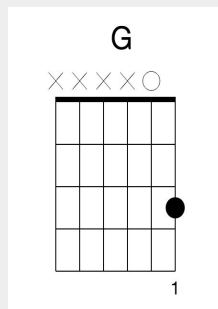


C - E - G

Ukulele Chords



Guitar Chords



You're a good soldier
 Choosing your battles
 Pick yourself up and dust yourself off
 and back in the saddle
 You're on the front line
 Everyone's watching
 You know it's serious we're getting
 closer, this isn't over
 The pressure is on
 You feel it
 But you've got it all
 Believe it
 When you fall get up oh oh
 And if you fall get up oh oh
 Tsamina mina zangalewa
 'Cause this is Africa
 Tsamina mina eh eh
 Waka waka eh eh
 Tsamina mina zangalewa
 This time for Africa

We are one (ole ole)

Chords

D Bm

E C#

Bm F#m

D E



B C# E C B A C

B C# E C B A B

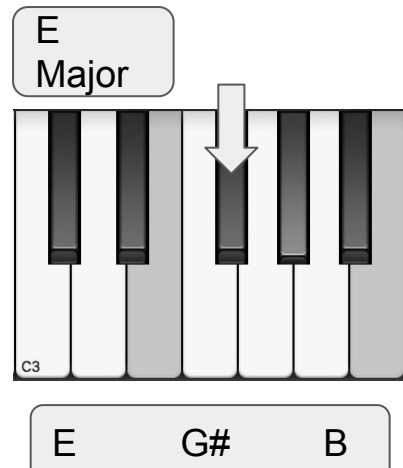
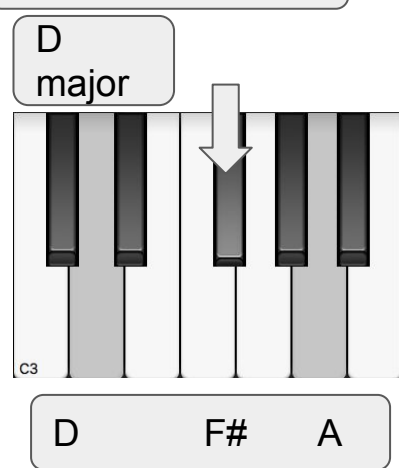
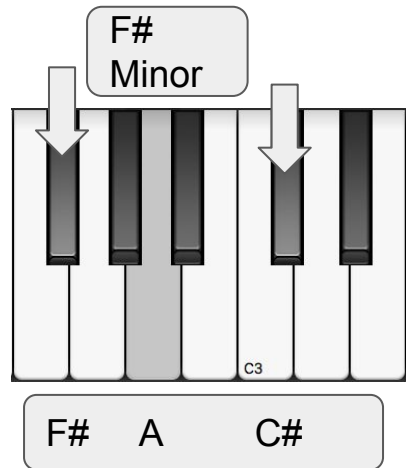
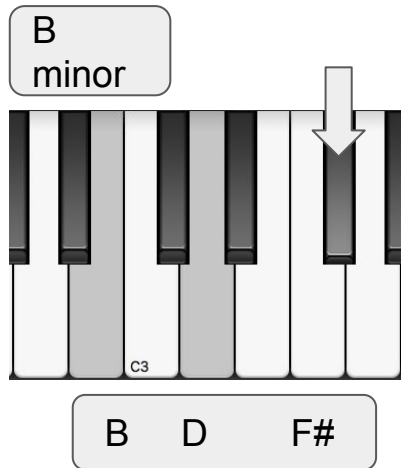
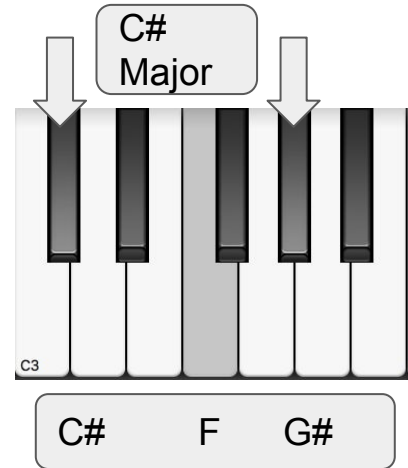
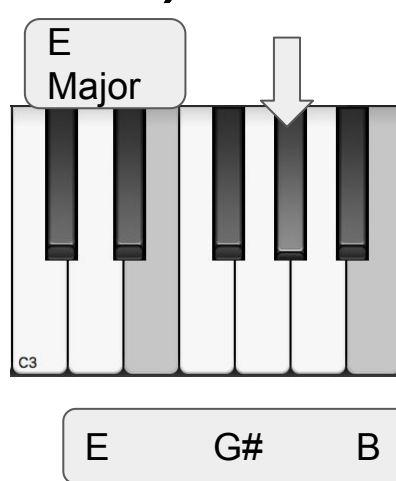
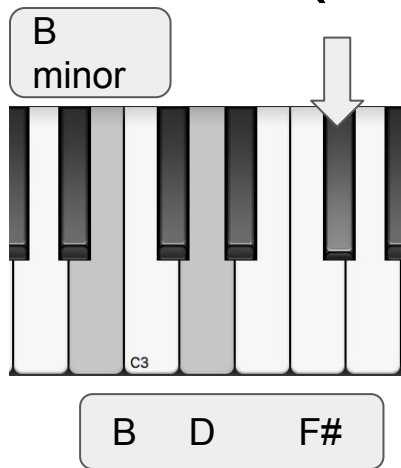
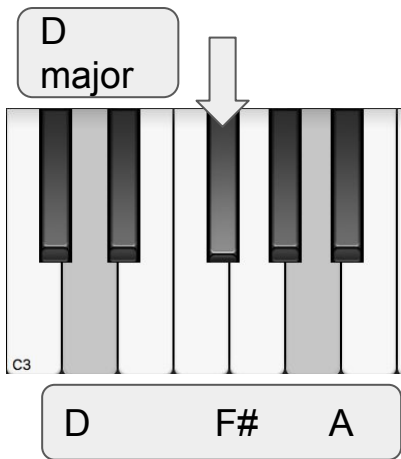
B C# E C B A B

B C# E C B A A

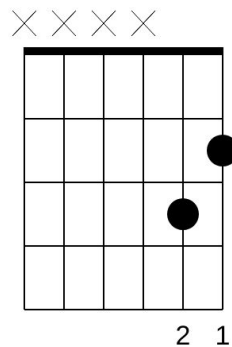


Put your flags up in the sky (Put them in the sky)
And wave them side to side (Side to side)
Show the world where you're from
(Show 'em where you're from)
Show the world we are one (One, love, life)

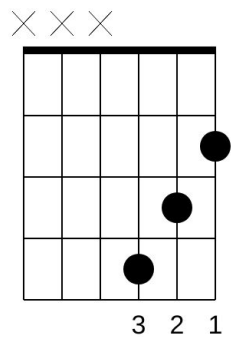
We are one (ole ole)



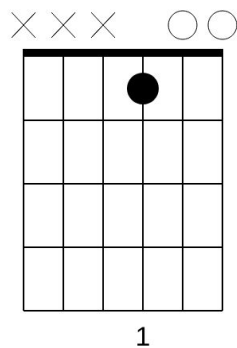
D



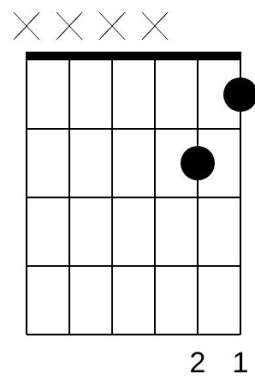
Bm



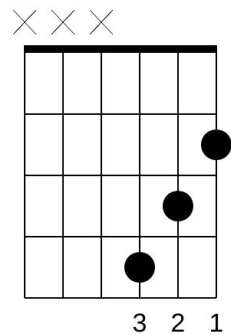
E



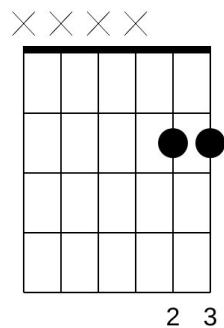
C#



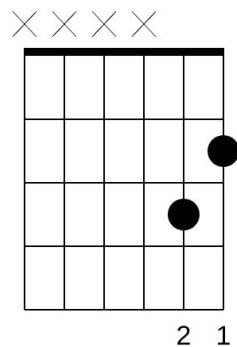
Bm



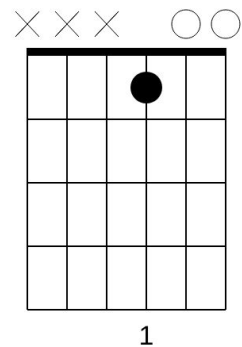
F#m



D



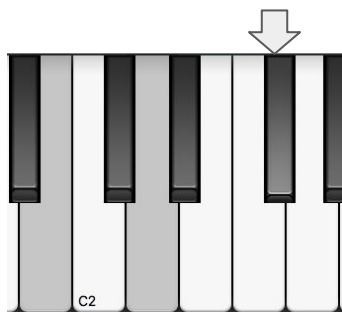
E



Despacito



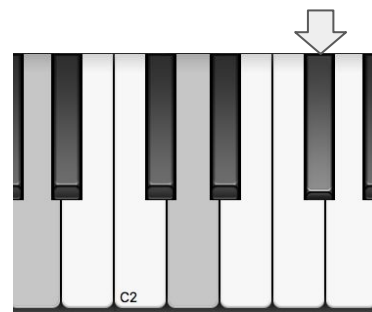
D C# C# B B B B B B A B G B B B B B B C# D
 A A A D D D D D E E C# D C# C# B



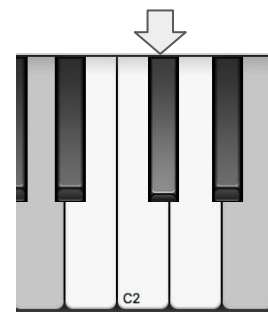
B - D - F#
B minor



B - D - G
G major



A - D - F#
D major



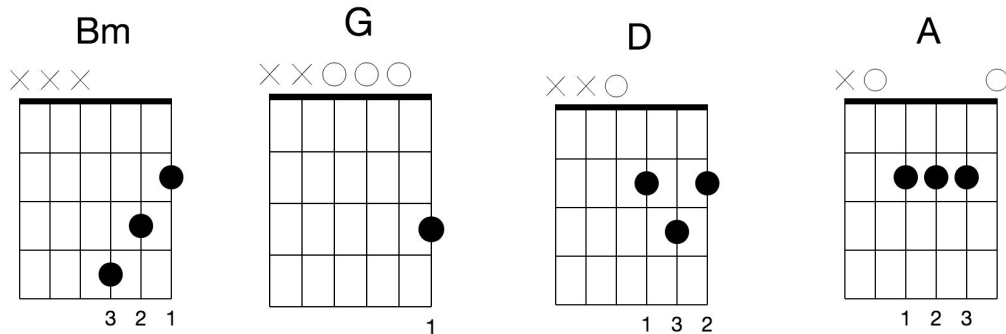
A - C# - E
A major

Despacito

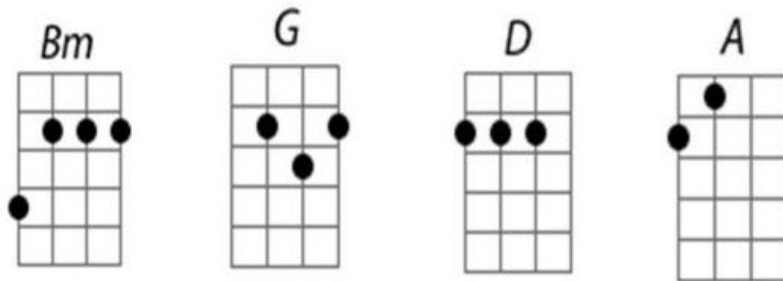
Guitar Tab

E-----0-0-----
B-3-2-2-0--0-0-0-0-0-0-0--0--0-0-0-0-0-0-0-2-3-----3-3-3-3-----2-3-2-2-0--
G-----2--0-----2-2-2-----

Guitar
Chords



Uke
Chords



Feedback

Focussed attempt at a simple piece	Correct notes	Some Fluency	Good instrumental technique	With Partner / Ensemble (in time)	Challenging piece	Creative arrangement	Lead a group / Very Challenging Piece	Highly Musical Outcome	Performing Process Grade /9	
<input type="checkbox"/>	<input type="checkbox"/>	<input type="checkbox"/>	<input type="checkbox"/>	<input type="checkbox"/>	<input type="checkbox"/>	<input type="checkbox"/>	<input type="checkbox"/>	<input type="checkbox"/>	0	

This is the criteria that we use for our practical assessments - how many ticks out of 9 did you get in your last assessment? Could you mark yourself out of 9 for a piece that you learnt from this booklet?

What went particularly well in your last assessment?

.....

.....

.....

What would you improve for next time? use the criteria above to help you

.....

.....

.....