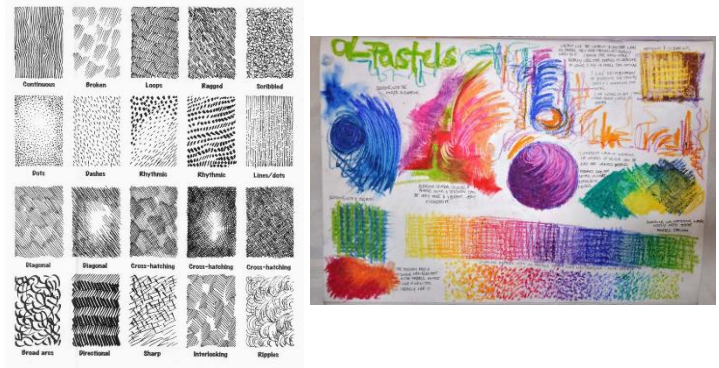


Year 9 Curriculum Content: Art & Design

ASSESSMENT OBJECTIVES

AO1	Develop ideas through investigations, showing critical understanding of artist's work.
AO2	Selecting and experimenting with appropriate media, materials, techniques and processes.
AO3	Record ideas, observations and insights relevant to intentions as work progresses.
AO4	Present a personal and meaningful response that demonstrates understanding of visual language.

MARK-MAKING



- ### Websites / Blogs / Online Magazines
- Tate.org.uk/art
 - Arterview.com
 - timeout.com/london/art/latest-art-reviews
 - saatchiart.com
 - craftscouncil.org.uk
 - artmonthly.co.uk
 - elephant.art
 - Pinterest
 - Artsy.net

- ### Local Galleries
- 198 Gallery (Brixton)
 - South London Gallery (Camberwell)
 - Dulwich Picture Gallery (Dulwich Village)
 - The Horniman Museum

- ### Galleries in and around London
- Tate Modern
 - Tate Britain
 - The Hayward Gallery
 - The Photographers Gallery
 - Whitechapel Art Gallery
 - The British Museum
 - The Victoria & Albert Museum

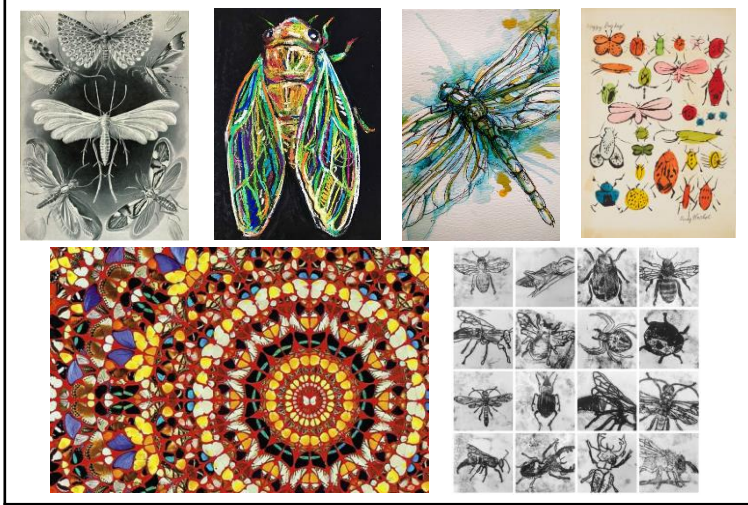
THE FORMAL ELEMENTS OF ART

Tone	The lightness or darkness of something. This makes your work more realistic and 3D.
Colour	Light reflected by an object measured by hue, saturation, brightness and contrast.
Shape	The external form, contours or outline of someone or something.
Pattern	A pattern is a design in which lines, shapes, forms or colours are repeated. The part that is repeated is called a motif. Patterns can be regular or irregular.
Texture	The surface quality of an artwork - the roughness or smoothness of the material from which it is made.

KEYWORDS

Word	Definition
Mixed-media	Artworks composed from a combination of different media or materials
Experiment	Exploring new ideas and/or techniques
Mark-making	The creation of different patterns, lines, textures and shapes
Expressive	Depicting the subject matter in terms of emotions and feelings
Observation	Drawing from real life
Composition	The arrangement of elements within a work of art

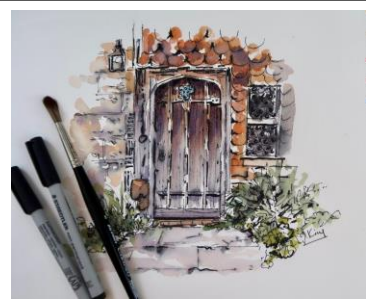
ARTISTS & CONTEXTUAL REFERENCES



MONOPRINTING



PEN & WASH



OIL PASTEL

