

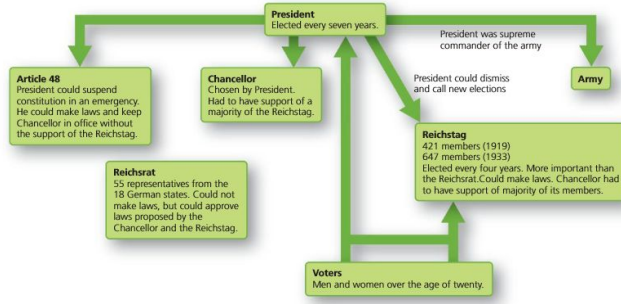
Kaiser Wilhelm II abdicates 1918	Treaty of Versailles 1919	Kapp Putsch 1920			Hyperinflation 1923		The Locarno Pact 1925			Kellogg-Briand Pact 1928	1929
-------------------------------------	------------------------------	---------------------	--	--	------------------------	--	--------------------------	--	--	-----------------------------	------

Spartacist Uprising 1919 Weimar Constitution finalised 1919 French occupation of the Ruhr 1923 The Dawes Plan 1924 Germany joins the League of Nations 1926 The Young Plan 1929

### Aftermath of WWI

After WWI a new government was established in Germany, which was accountable to the **Reichstag** rather than the **Kaiser**. In order to establish peace after WWI the USA insisted that the Kaiser was removed from power. On the 9<sup>th</sup> November, Kaiser Wilhelm **abdicated**. The new government was led by **Chancellor Friedrich Ebert** and agreed to **Armistice** based on America's **Fourteen Points**.

### The Weimar Constitution



In January 1919 an election took place but no party had a direct majority. They had to form a **coalition** which Ebert (of the **Social Democratic Party –SPD**) became President of. They joined with the Catholic **Centre Party (ZP)** and the **German Democratic Party (DDP)**. A coalition meant that there were some weaknesses to the government.

### The Treaty of Versailles

The **Treaty of Versailles** was harsh on Germany and forced them to sign the **War Guilt Clause**, lose land, army, equipment and pay back £6.6 billion in **reparations**.

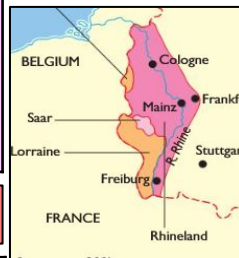
### Opposition

The German people felt the government had stabbed them in the back (**Dolchstoß**). They called the government the **November Criminals**.



1. The **Spartacists**, in January 1919, inspired by the left-wing **Bolshevik** revolution in Russia, set up the Communist Party and tried to overthrow the government. This was put down by the **Reichswehr** & the **Berlin Freikorps**.
2. The **Kapp Putsch** (right-wing) was attempted in March 1920. Ebert wanted to disband the **Freikorps** so they joined with the Reichswehr in Berlin. Led by Wolfgang Kapp they seized Berlin. Ebert asked **Trade Unionists & Civil Servants** to support it, and the Putsch collapsed.

### Problems of 1923



When Germany couldn't pay their reparations, the French moved into the **Ruhr** to take goods for themselves. The Germans went on strike & sabotaged their work, setting factories alight and breaking pumps. This meant that production from the **Rhineland** was very slow, making Germany poorer.

The government printed more money to pay the strikers and their reparations which, coupled with the slow production in the Ruhr, led to **hyperinflation** where the currency became virtually worthless.

### Economic Recovery

In 1923 Gustav **Stresseman** was **Chancellor** and is largely credited with the economic recovery of Germany. **The Dawes Plan** changed the reparations schedule to something which was more manageable. It also meant that French troops would leave the Ruhr. **The Rentenmark** was the new currency, issued in limited amounts. Once it worked for a year, it was converted to the **Reichsmark**, based on gold reserves. **The Young Plan** was developed by US banker, Young. He reduced the reparations figure and extended the time the Germans had to pay it.

### Foreign Recovery

**The Locarno Pact** helped German relations with France, Britain, Belgium & Italy by agreeing borders. **The League of Nations** agreed to admit Germany in 1926. **The Kellogg-Briand Pact** was signed in 1928, along with 64 other countries. It said they could have armies for self-defence and would resolve disagreements peacefully.

### Changes in Society

Wages had increased by over 10% by 1928. Although this helped the working class, the middle classes had been bankrupted by hyperinflation. Unemployment amongst the middle class increased. More **houses** were being built: 2million + between 1924-1931, which reduced homelessness. **Women** were given the vote and could work in a variety of areas: teaching, civil service etc. Art, architecture, literature and theatre began to change and become more rich & diverse.

### Historiography

**F. Reynoldson Weimar & Nazi Germany 1996**  
 "From 1924 – 1929 the Weimar Republic was much stronger than it had been just after the war. Led by Stressemann in the Reichstag, the different parties managed to work together. The extreme parties such as the Nazis gained fewer seats in the elections. The German people were better off and more contented. The Weimar Republic looked safe."

**E. Wimlott Weimar & Nazi Germany 1997**  
 "German prosperity was built on quicksand foundations. The Weimar economy was dependent upon high-interest American loans, which usually had to be repaid or renewed within three months. In times of depression, US money lenders could demand rapid repayment. Moreover, unemployment never fell below 1.3 million. Although big business grew in the 1920s, small firms struggled and many went bankrupt."

1919	Hitler sets up the Nazi Party	1920	Hitler introduced the SA	1921	Kapp Putsch	1922		1923		1924		1925	Bamberg Conference	1926		1927		1928	The Locarno Pact	1929	Stressemann dies	1930		1931	Papen becomes Chancellor	1932	Schleicher becomes Chancellor	1933	Hitler becomes Chancellor
------	-------------------------------	------	--------------------------	------	-------------	------	--	------	--	------	--	------	--------------------	------	--	------	--	------	------------------	------	------------------	------	--	------	--------------------------	------	-------------------------------	------	---------------------------

Hitler joins the German Workers Party

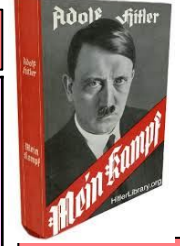
The Munich Putsch

Nazis win 12 seats in Reichstag

Wall Street Crash  
Nazis win 107 seats in Reichstag  
Nazi win 230 seats in Reichstag  
Nazi win 196 seats in Reichstag

### Hitler's Early Life

Hitler was born in 1889 in **Austria**. When his father died in 1903, it brought him closer to his mother. During 1907, she died and Hitler was turned away from the Academy of Fine Arts Vienna. Following this, he made a living by painting postcards whilst sleeping rough. He fled to Germany and joined the German Army, winning the Iron Cross twice. By the end of WWI, he was temporarily blinded by a gas attack.



In reality, the Munich Putsch failed after the alarm was raised and the SA were no match for the Army. Hitler ended up in Landsberg Prison in 1924 for 9 months. He had used his trial to gain political celebrity and whilst in prison reached two turning points: 1) he needed to gain power legally and 2) he wrote *Mein Kampf* which went on to be the pinnacle of his politics.

### Growth in Support for the Nazis

**Joseph Goebbels** was instrumental in securing further success for the Nazis between 1929-1930. They increased their presence on a national scene through posters, newspapers and the radio. Hitler took the opportunity to exploit the problems from a coalition government and presented German people with an alternative: a strong, united Nazi government. He began to use the Jews as scapegoats for the country's problems. The **1930 election** was a breakthrough for Hitler and the Nazis became the second largest party in the Reichstag. During the presidential election of 1932, Hitler continued to make gains. The Nazis were funded by industrialists, through their fears of Communism.

### Historiography

**Ian Kershaw *The Hitler Myth (2001)***  
"Hitler had a deep-seated, lasting sense of revenge—something you don't come across in history too often."

### The Growth of the NSDAP

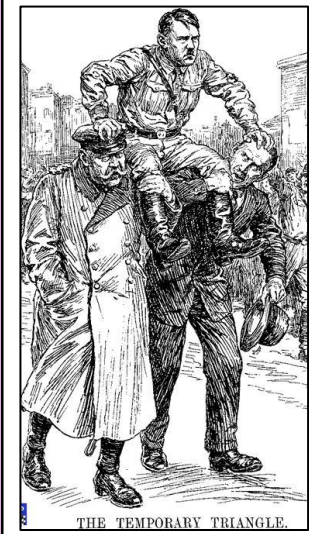
Hitler became an informant for the Army after WWI. He was asked to spy on the DAP. The leader of the DAP, Anton Drexler, was so impressed with how he spoke that he asked him to join. Hitler spoke about **Dolchstoss**, his hatred of the Weimar Republic and about anti-Semitism. After 1920 'National Socialist' was added to the party's name & Hitler and Drexler wrote the **Twenty Five Point Plan**, containing ideas about nationalism, pure German blood and anti-Semitism. This went on to become the party's manifesto. Membership to the party continued to grow with Hitler as leader.

### The Lean Years 1924-1928

Hitler persuaded the government to lift its ban on the Nazi Party and reorganised the party into **Gaue's** run by a **Gauleiter** he trusted. At the **Bamberg Conference** in 1926, he convinced other potential leaders Strasser & Goebbels that he was the right man for the job. By 1928 the Nazi Party had over 100,000 members but only 12 seats in the Reichstag. It was progress...but not enough.

### Political Developments in 1932

By 1932, Brüning had lost Hindenburg's support because of how he had failed to improve the German economy. In the 1932 July election the Nazis won 230 seats (37.4%) and were now the biggest party in the Reichstag. Hitler demanded the role of Chancellor but von Papen refused to relinquish it and dissolved the Reichstag. He called for new elections in November. This time, the Nazis only secured 196 seats (33.1%). Papen resigned and was replaced by Schleicher. Papen & Hitler began working together and convinced Hindenburg that having Hitler as Chancellor would bring stability to Germany. On 30<sup>th</sup> January 1933, Hitler was made Chancellor.



**KD Bracher (1979)** argued that Hitler was an ideologue, propelled to self-destruction by his ideology, a fanatic for whom 'nothing else mattered in the end' save a perverse desire to massacre the Jews

### The Munich Putsch

Hitler introduced the **Sturmabteilung (SA)** in 1921 to control violence at political meetings and to intimidate political opposition. In 1923 he began to plan a **coup** where he would seize political power from the **Bavarian** government, (Kahr, Lossow & Seisser) before marching on Berlin and seizing power from the Weimar government. He had watched **Mussolini** do this in Italy & began to make plans, with support from General Ludendorff.

### Unemployment

In 1929 the **Wall Street Crash** caused America to recall their loans from the Dawes Plan. The **Great Depression** caused massive unemployment in Germany. At the same time, Stressemann died & Germans lost hope. In 1930 the new Chancellor Brüning introduced a 2.5% wage cut & increased taxes to attempt to balance the books. He was nicknamed the 'Hunger Chancellor'. By 1932, unemployment exceeded 6 million. In order to get things passed, Hindenburg used **Article 48** and began to use the Reichstag less and less. This time period saw a rise in violence and the Nazi Party began making small political gains. At this time, the German Communist Party (KPD) was also growing \* aimed for political success, rather than revolution.



1933	February Reichstag Fire	March – Enabling Act passed	May – Trade Unions banned	1934	The People’s Court is established	August – Hindenburg dies	1935	Hitler establishes the Ministry of Church Affairs	1936		1937	Hitler renews the Enabling Act	1938	Throughout 1938 Hitler removes 16 generals from their positions
January – Hitler becomes Chancellor	March – Nazis win 288 in Reichstag election	July – Nazis = only party in Germany	June – Night of the Long Knives	August – Hitler makes himself Fuhrer							Pope Pius XI’s ‘With burning anxiety’ letter			

### Reichstag Fire – 27<sup>th</sup> February 1933

Hitler was looking to get more Nazis in the cabinet so he called an election for 5<sup>th</sup> March 1933. Violence broke out in the run up and over 70 deaths occurred.

Marinus van der Lubbe (Dutch Communist) was found at the scene and arrested. Hitler claims that there is a Communist takeover and uses the **Reichstag Fire Decree** to suspend civil rights. Over 4000 Communists were arrested. Communist & socialist newspapers were banned.

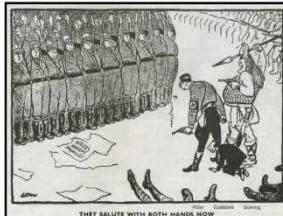


After the election, the Nazis won 288 seats but it wasn't a majority. He formed a **coalition** with the National Party and had 51.9%. Hitler then forced the **Enabling Act** through the Reichstag on 24<sup>th</sup> March. He banned Communists from attending and said that anyone who wasn't there would count as a vote in favour. He then renewed the Enabling Act in 1937 & 1941

### Removal of Opposition

Hitler wanted to bring Germany into line with Nazi ideals – **Gleichschaltung**. On 2<sup>nd</sup> May 1933 he banned trade unions and replaced them with the **German Labour Front (DAF)**. Strikes were banned and anyone breaking this law was put in the first concentration camp: Dachau. On 14<sup>th</sup> July, Hitler banned all other political parties with the **Law against the Formation of Parties**. In the November 1933 election, the Nazis secured 39,638,000 votes. Hitler stopped Germany being run by local governments (Lander) and instead centralised it. He decided that the **Lander** should be run by Reich governors and abolished their parliaments in January 1934.

### The Night of the Long Knives – 30<sup>th</sup> June 1934



Hitler was concerned that the **SA** was becoming unruly and would only answer to Rohm and not Hitler. The Army (**Wehrmacht**) wanted the SA to be abolished and the **SS** wanted to break away from its' reputation, too. There was some suggestion that Rohm was planning a coup, to make Nazi politics more socialist and support the working class.

On 30<sup>th</sup> June 1934 Rohm and other SA leaders were shot by the SS. This included Gregor Strasser and Kurt von Schleicher. It is thought that around 400 people were murdered. The SA's control was reduced and Hitler secured the support of the Wehrmacht. When Hindenburg died in August 1934, the army swore allegiance to Hitler, who had now called himself **Fuhrer**.

### The Creation of the Police State

The Nazis quickly established control through a regime of fear. **'Some Germans Could Shout Loud'**. **SS**: The SS was led by Himmler. They showed complete obedience to Hitler. It had 250,000 members by 1939 and they were of pure **Aryan** descent. It was their job to remove opposition in Germany. **Gestapo**: The Gestapo were the secret police and their role was to imprison opposition. By 1939 it was estimated that they had arrested over 160,000 people for 'political crimes'. **Concentration Camps**: This was initially a new prison for hard labour. It was designed to keep political opponents away from society. Mortality rates were high. **SD**: The role of the SD was to gather intelligence. It was run by Himmler. They were hunting out enemies of the state. **Law**: Some judges were removed & they had to take an oath to Hitler. People's Court tried cases of treason & gave harsh sentences.

### Policies towards the Church

Hitler wanted to weaken the power of the Church. **Catholic** Church – Showed allegiance to the Pope. Catholic school policies were not the same as Nazis. Hitler initially signed a **concordat** with Pope Pius XI and agreed to stay out of the church. Within a few months he had broken this agreement. **Protestant** church – Many Protestants opposed the Nazis and were led by Pastor **Niemoller**. They organised resistance.

### Goebbels & Propaganda

Goebbels set up the **Reich Chamber of Culture** and manipulated all aspects of German lives. He closed down non-Nazi newspapers. He organised an annual rally at **Nuremberg**. The Hitler Youth also organised local rallies. By 1939, the **People's Receiver** (radio) was in over 70% of German homes, allowing the Nazi message to be spread. All films had to be censored and had a political message. Every film was accompanied by a 45 minute Nazi newsreel. Posters targeted the young and had simple messages about loyalty and Aryanism. Books, plays & poems were censored. Students in Berlin burned over 20,000 books in 1933 for containing 'anti-Nazi' messages.

German folk music was encouraged and German composers. Jazz and other American music was banned. Hitler hated modern art and called it 'degenerate', quickly banning it. He wanted artwork to glorify strong heroes. Architecture reflected Ancient Greek or Roman buildings. Sport was encouraged at school & in Hitler Youth. The 1936 Olympics showed the world Germany's strength – they won.



### Opposition & Resistance

By 1939 over 1.3 million people had been sent to a concentration camp. In 1938, Hitler removed generals from the army who criticised him. During 1939 there were three assassination attempts on Hitler. Some of the youth opposed Nazi rule. Groups like the **Edelweiss Pirates** who listened to Swing music and wore American clothes. **The Swing Youth** were similar – girls often wore makeup and boys grew their hair long. The protestant Church resisted, led by Niemoller. He established the **Pastors' Emergency League** but was eventually arrested. The Pope issued a letter called 'With Burning Anxiety' to all Catholic churches in 1937. In it he criticised the Nazi regime.

### Historiography

**Broszat & Mommsen** both suggest that the concept of "cumulative radicalisation": as competition between Nazi groups intensified, their policies and actions became more radical as they sought to outdo each other. This radicalisation eventually led to war and racial genocide.

Boycott of Jewish businesses 1933	First Napola schools opened 1934		1935	Conscription introduced	1936		1937	Lebensborn starts 1938	Kristallnacht 1939
Sterilisation law passed	Moringen concentration camp opened		Nuremberg Laws passed			Compulsory membership of the Hitler Youth	Nazis win 12 seats in Reichstag	Jewish children expelled	Ghettos established

### Women

All organisations involving women are brought together under the **Frauenfront** which is run by Gertrude Scholtz-Klink. Women were expected to look natural, be well built, not smoke and to be mothers and housewives foremost. This was encouraged through:

- Propaganda
- Loans (Law for Encouragement of Marriage '33)
  - German Mother's Honour Cross
- Lebensborn (donate a baby to the Fuhrer)
  - Sterilisation Law

Women were encouraged to join the **BDM** (League of German Maidens) and to train as a housewife through the Reich Mother's Service.

They were to follow **Kinder, Kuche, Kirche** & forced out of jobs like teaching, doctors, lawyers & politicians.

Women who didn't follow these rules were put in women's concentration camps like **Moringen**.

### Workers

The **Reich Labour Service** was introduced from 1935 provided manual jobs. The Nazis reduced unemployment from over 6 million to about 35,000 BUT they didn't include Jews, prisoners in concentration camps or women in those statistics so the reality was lots more unemployment.

They created huge projects like the constructing **autobahns** to give more people jobs. They also started **rearmament** – ignoring the Treaty of Versailles and introducing **conscription**. In 1933, the army was 100,000, by 1939 it was 1.4 million.



### Racial Beliefs

Hitler wanted to create **Volksgemeinschaft**: a people's community where everyone was working together to make Germany better. He described Aryans as **Herrenvolk**: the Master Race. He believed they had been contaminated by subhumans (or **untermenschen**). The Nazis considered Jews and Slavs to be evil and used propaganda to spread conspiracies about them. He wanted people to believe that the Jews needed to be removed from society.



### Historiography

**Germany 1918–45 by J Cloake, published in 1997.**

“young people were attracted by the exciting and interesting activities of the youth movements. There were outdoor events like camping and hiking as well as sports. Some enjoyed the military aspects, the uniforms, the marching and the discipline. Others liked the music that was a frequent part of cultural activities or the military parades. There was great comradeship among the Hitler Youth.”

**Germany 1858–1990: Hope, Terror and Revival by A Kitson, published in 2001**

“It became less popular towards the late 1930s things became focused on preparations for war and discipline was more strict. There was a growing resentment at the way Hitler Youth leaders acted as if they were better than members who were barely younger than they were.”

### The Youth

There were three types of schools:

The **Napola** – boys from 10-18 who later joined the Army. The **Adolf Hitler Schools** – 12-18, the elite of the Hitler Youth **Ordensburgen** 20+ - graduates of Adolf Hitler Schools.

Lessons were overhauled to teach a different version of History, Geography showed that land had been stolen from the Germans. Teachers had to join the **Nazi Teachers' League**. Students had to study Eugenics which 'proved' that Germans were superior to Jews. 15% of the timetable was PE. Boys studied Maths & Science whereas girls studied cooking and Biology.

Boys, outside of schools, were encouraged to join the **Hitler Youth** and membership was made compulsory in 1936 (although not strictly enforced). Girls could join the **League of German Maidens (BDM)** to prepare them for their future.



### Standard of Living

The **Strength Through Joy (KdF)** programme tried to improve leisure time of German workers. They subsidised concerts, theatre visits, museums, holidays and cruises. The **Beauty of Labour** scheme improved working conditions by building pools & canteens. The **Volkswagen** was introduced – The People's Car. Workers could pay into a monthly fund and could eventually get a new car. Average weekly wages rose throughout the decade.

However, workers were not allowed to join unions or to strike, and six months' labour service was compulsory. Few could afford the luxury offers from the KdF so it caused resentment. Nobody ever received a Volkswagen car. Although wages went up, so did the cost of living and hours of working.

### Anti-Semitism & Persecution

In October 1936, Jewish teachers were forbidden from teaching. By 1938, all Jewish children had been expelled from schools. In April 1933, Hitler organised a boycott of Jewish businesses – trying to drive them out of Germany. It was done on a Saturday which is the Jewish day of rest so wasn't overly successful.

By 1935 he introduced the **Nuremberg Laws**. These took away citizenship from Jews meaning they had no protection from the State & also made relationships between Jews & Germans illegal. People in existing marriages were encouraged to divorce.

On 9<sup>th</sup> November 1938, the SS carried out **Kristallnacht**. They destroyed 7500 Jewish businesses, put 20,000 Jews in concentration camps, destroyed 191 synagogues and killed over 100 Jews. This was blamed on a Polish Jew who had shot a German official in Paris. Jews were not allowed to make insurance claims for this and if their businesses were to re-open, they had to do so under German management.

In 1939 the **Reich Office for Jewish Emigration** was established and Jews were encouraged to leave Germany by confiscating their goods, property and businesses & being forced onto **ghettos** in appalling conditions.